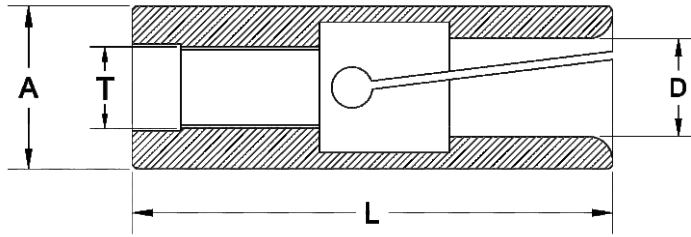


Bar Feeder Collets



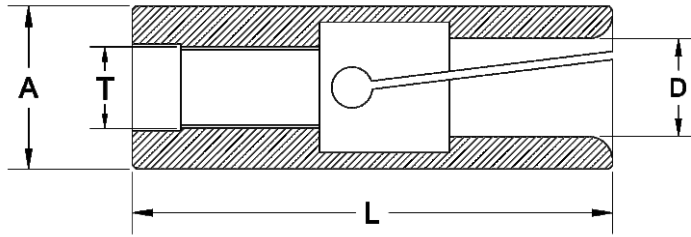
BARFEEDER COLLETS WITH INTERNAL THREAD

All Dimension are in mm - Unless Otherwise Specified

Part Nr.	Guiding Dia	Length	Thread	Capacity	
				Range	
	ØA	L	T	Ø Min	Ø Max
BF05/01	5.15	37	M4x0.7	1	3.5
BF7.5/02	7.5	40	M5x0.50	1	5.5
BF08/02	8	50	M4x0.70	1	6
BF8.5/01	8.5	30	M5x0.80	1	6
BF09/01	9	40	M6x0.75	1	7
BF9.5/02	9.5	45	M5x0.80 LH	1	7.5
BF9.5/03	9.5	45	M5x0.80	1	7.5
BF10/03	10	46	M6x1 LH	1	8
BF10/04	10	42	M6x0.75	1	8
BF10/06	10	50	M5x0.80 LH	1	8
BF10/08	10	50	M5x0.80	1	8
BF12/01	12	42	M7x0.75	1	10
BF12/04	12	40	M6x1 LH	1	10
BF12/06	12	42	M7x0.75	1	10
BF12/07	12	45	M5x0.80 LH	1	10
BF13/01	13	60	M8x1 LH	1	11
BF13/02	13	50	M5x0.80 LH	1	11
BF14/01	14	42	M8x1	3	12
BF14/04	14	42	M7x0.75	3	12
BF15/02	15	42	M8x1	3	13
BF15/03	15	60	M9x1 LH	3	13

* table to be continued

Bar Feeder Collets



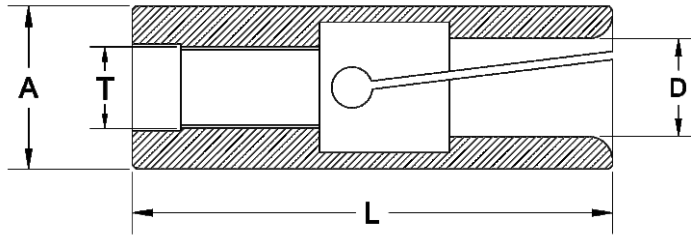
BARFEEDER COLLETS WITH INTERNAL THREAD

All Dimension are in mm - Unless Otherwise Specified

Part Nr.	Guiding Dia	Length	Thread	Capacity	
				Range	
	ØA	L	T	Ø Min	Ø Max
BF15/04	15	60	M10x1 LH	3	13
BF15/07	15	40	M5x0.50	3	13
BF15/09	15	73	M10x1 LH	3	13
BF15/11	15	60	M10x1	3	13
BF15/12	15	60	M8x1	3	13
BF15/14	15	85	M12x1 LH	3	13
BF15/15	15	50	M9x1 LH	3	13
BF15/16	15	16	M8x1 LH	3	13
BF16/01	16	73	M10x1 LH	3	14
BF16/04	16	58	M9x1 LH	3	14
BF16/06	16	42	M8x1	12	14
BF18/03	18	42	M9x1 LH	6	16
BF18/04	18	60	M9x1 LH	13	16
BF18/05	18	59	M10x1 LH	13	16
BF18/06	18	59	M10x1	13	16
BF19/01	19	59	M10x1	13	17
BF19/06	19	60	M9x1 LH	13	17
BF19/08	19	40	M8x1	12	17
BF19/09	19	50	M5x0.80 LH	13	17
BF20/03	20	59	M10x1	4	17
BF20/04	20	60	M10x1 LH	13	17

* table to be continued

Bar Feeder Collets



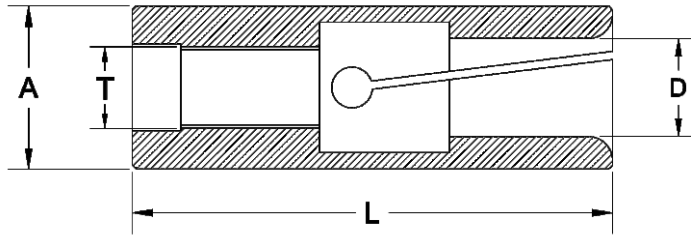
BARFEEDER COLLETS WITH INTERNAL THREAD

All Dimension are in mm - Unless Otherwise Specified

Part Nr.	Guiding Dia	Length	Thread	Capacity	
				Range	
	ØA	L	T	Ø Min	Ø Max
BF20/07	20	60	M10x1	13	17
BF20/08	20	59	M9x1 LH	13	17
BF20/09	20	42	M10x1	8	17
BF20/10	20	59	M9x1	13	17
BF22/01	22	59	M10x1	17	19
BF22/04	22	59	M9X1LH	17	19
BF23/04	23	59	M10x1	17	20
BF23/05	23	60	M9x1 LH	17	20
BF24/01	24	60	M9x1 LH	17	21
BF25/06	25	59	M10x1	17	22
BF25/07	25	59	M10x1 LH	17	22
BF25/08	25	60	M9x1 LH	17	22
BF25/09	25	60	M17x1	13	22
BF26.5/01	26.5	65	M17x1	15	23
BF27/01	27	65	M10x1 LH	15	24
BF27/02	27	65	M10x1	15	24
BF27/03	27	59	M9x1 LH	15	24
BF29/01	29	65	M18x1.5 LH	17	26
BF30/01	30	65	M10x1	24	27
BF30/03	30	65	M18x1.5	17	27
BF30/04	30	65	M18x1.5 LH	17	27

* table to be continued

Bar Feeder Collets



BARFEEDER COLLETS WITH INTERNAL THREAD

All Dimension are in mm - Unless Otherwise Specified

Part Nr.	Guiding Dia	Length	Thread	Capacity	
				Range	
	ØA	L	T	Ø Min	Ø Max
BF30/05	30	65	M10x1 LH	17	27
BF32/01	32	70	M17x1 LH	19	29
BF32/02	32	80	M25x1.5 LH	19	29
BF32/04	32	80	M25x1.5	19	29
BF35/02	35	80	M25x1.5	29	32
BF35/04	35	80	M25x1.5 LH	29	32
BF36/01	36	100	M30x1.5	23	33
BF40/01	40	80	M25x1.5	32	37
BF42/02	42	90	M25x1.5 LH	29	39
BF42/04	42	80	M25x1.5 LH	32	39
BF42/05	42	90	M32x1.5 LH	29	39
BF42/08	42	80	M25x1.5	29	39
BF44/01	44	80	M25x1.5 LH	39	41
BF46/01	46	80	M25x1.5	37	43
BF46/02	46	80	M25x1.5 LH	41	43